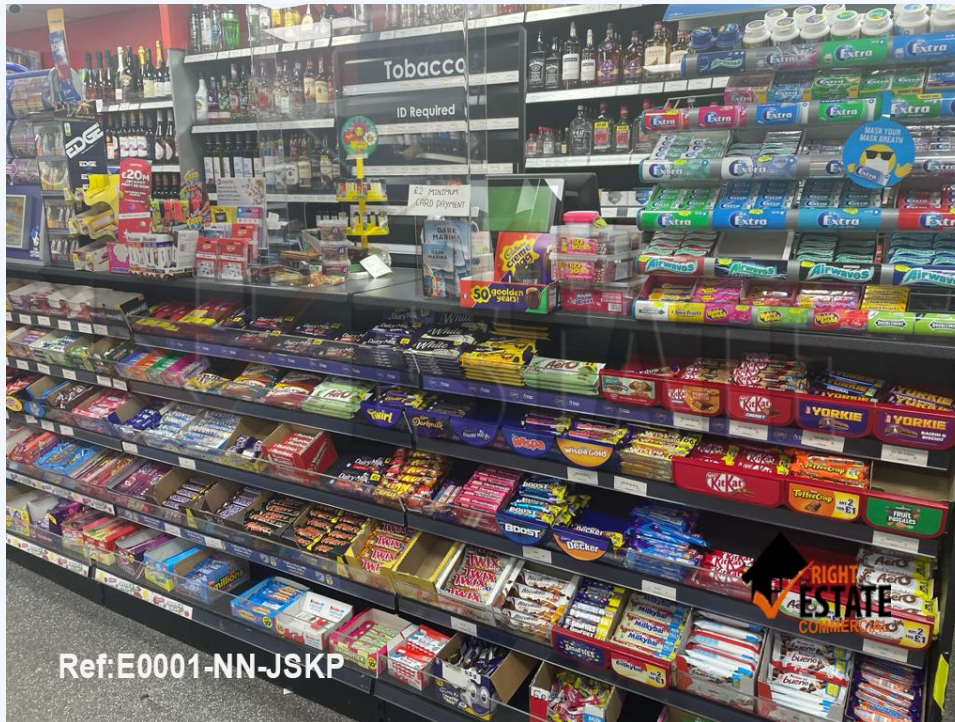


E0001-NN-JSKP, OFF LICENCE WITH ACCOMMODATION IN PROMINENT LOCATION- KATTERING

For lease. £ 45,000.00



Right Estate Commercial is delighted to market off licence with accommodation in a prime location - Kettering

According to the seller; Asking Price: £45000 Turnover: £4000-£4500 Tenure: Leasehold Rent: £15,000pa Opening hours: Mon-Sat 8am- 8pm || Sun 8am- 6pm Short Description Right Estate Commercial is delighted to market off licence with accommodation in a prime location - Kettering Description 620sqm off licence in a prominent location with three bedrooms above and two bedrooms in the shop cellar are available for lease. This shop has the potential to increase sales by extending the opening hours. The single-door off licence offers a variety of frozen foods, news and magazines, Asian groceries, and alcohol. Call us on 019 3332 2035 to arrange a viewing PERSONALLY INSPECTED AND HIGHLY RECOMMENDED. MUST BE SEEN TO BE FULLY APPRECIATED. Right Estate Commercial does not accept any responsibility for the accuracy of the property descriptions, related information provided here.